

CABLE 399 RF: SMA STRAIGHT PLUG + SMA RIGHT ANGLE BULKHEAD JACK WITH O-RING RATED TO IP67/68 + MULTIPLE CABLE SIZES, 6GHz

SPECIFICATIONS :

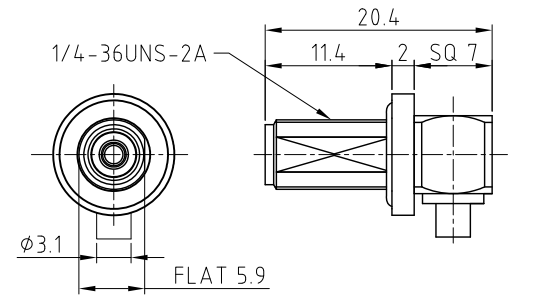
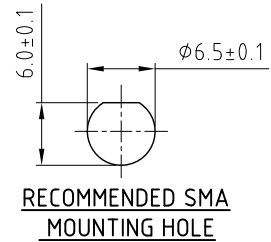
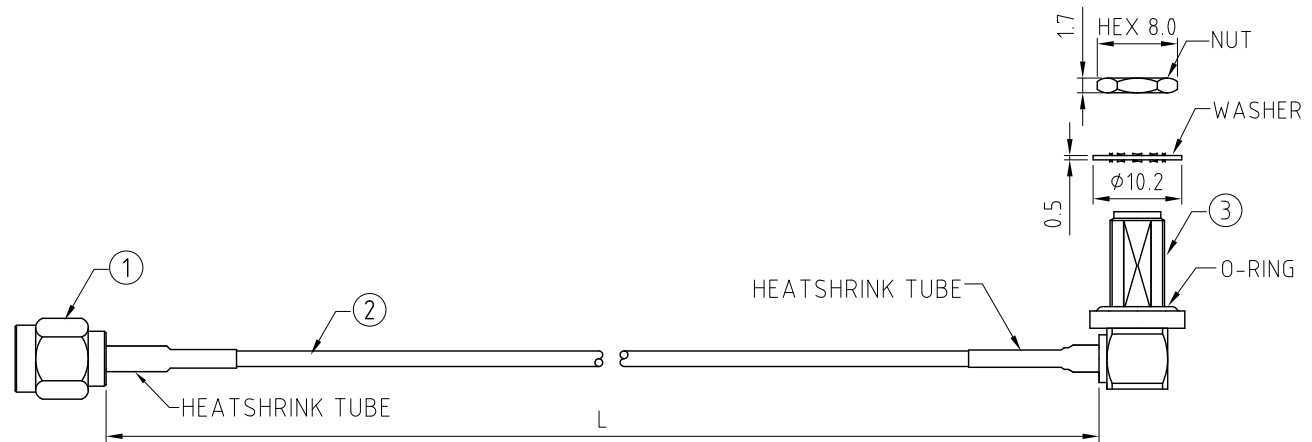
- SMA STRAIGHT PLUG, P/N:
FOR RG178 CABLE: RFCT-SMA022-M78.
FOR $\phi 1.13\text{MM}$ CABLE: RFCT-SMA011-M13.
- COAXIAL CABLE, SEE P/N FOR DETAIL.
- SMA RIGHT ANGLE BULKHEAD JACK WITH O-RING RATED TO IP67/68, GOLD PLATED, P/N:
FOR RG178 CABLE: RFCT-SMA073-F78 W/SILICONE O-RING OR RFCT-SMA073-F78-3 W/FLUOROSILICONE O-RING.
FOR $\phi 1.13\text{MM}$ CABLE: RFCT-SMA079-F13 W/SILICONE O-RING

ENVIRONMENTAL:

- A. BULKHEAD MOUNTED CONNECTOR (RFCT-SMA073-F78/RFCT-SMA079-F13) RATED TO THE FOLLOWING SPECIFICATION:
- IP6X - DUST TIGHT - NO PARTICLE INGRESS.
 - IPX7 WATERPROOF FOR 30 MINUTES UP TO 1 METER UNDERWATER.
 - IPX8 WATERPROOF FOR 48 HOURS AT 1 METER UNDERWATER.

NOTES:

- WORKING FREQUENCY RANGE: DC-6GHz.
- OPERATING TEMPERATURE: -40°C TO $+125^{\circ}\text{C}$
- IMPEDANCE: 50 OHM



SMA BULKHEAD JACK DETAIL DRAWING

HOW TO ORDER

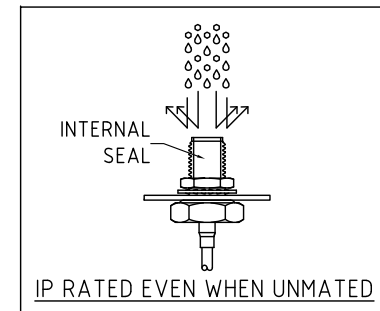
CABLE 399 RF - X X X X - X - X - X

"L" LENGTH IN MM:
eg: 100MM = 0100
(MIN. 050-MAX.2000)
STANDARD = 0100, 0150, 0200
Tolerance: 50-200mm: $\pm 5\text{mm}$.
201-500mm: $\pm 7\text{mm}$.
>500mm: $\pm 10\text{mm}$.

O-RING MATERIAL OPTIONS:
BLANK = SILICONE, COLOR: RED (STANDARD)
F = FLUOROSILICONE, COLOR: BLACK

CABLE SIZE OPTIONS:
1 = RG178 CABLE, COLOR: BROWN
2 = $\phi 1.13\text{MM}$ CABLE, COLOR: GRAY

WASHER AND NUT OPTIONS:
BLANK = SEPARATELY PACKED (STANDARD)
A = ASSEMBLED WITH CONNECTOR



REV.	DATE & DRN
10	20/04/20 - N/W RELEASE
11	24/07/20 - N/W AMEND OPERATING TEMP.
12	25/02/21 - N/W ADD IP OPTION
13	05/07/23 - N/W ADD F O-RING OPTION
14	31/03/24 - CC ADD IP RATING VIEW

Scale: NTS	THIRD ANGLE	Unstated Tolerances: .X N/A .XX N/A .XXX N/A ANGLES N/A
Drawn: CC		
App'd: XXX	Title CABLE ASSEMBLY	
Date: 31 MAR. '24	Revision: 1.4	Unit: mm



IP Rated RF Products www.gradconn.com

THIS DRAWING IS CONFIDENTIAL AND MUST NOT BE COPIED OR DISCLOSED WITHOUT WRITTEN CONSENT

Type: Cable 399 RF
CABLE 399 RF
Drawing Number:
Sheet 1 of 1
Drawing © E and O E